

Konfigurationsanleitung Zyxel ADSL Router/Modem

Sie können via Webbrowser auf den Zyxel Router zugreifen.

Default IP Adresse à 192.168.1.1

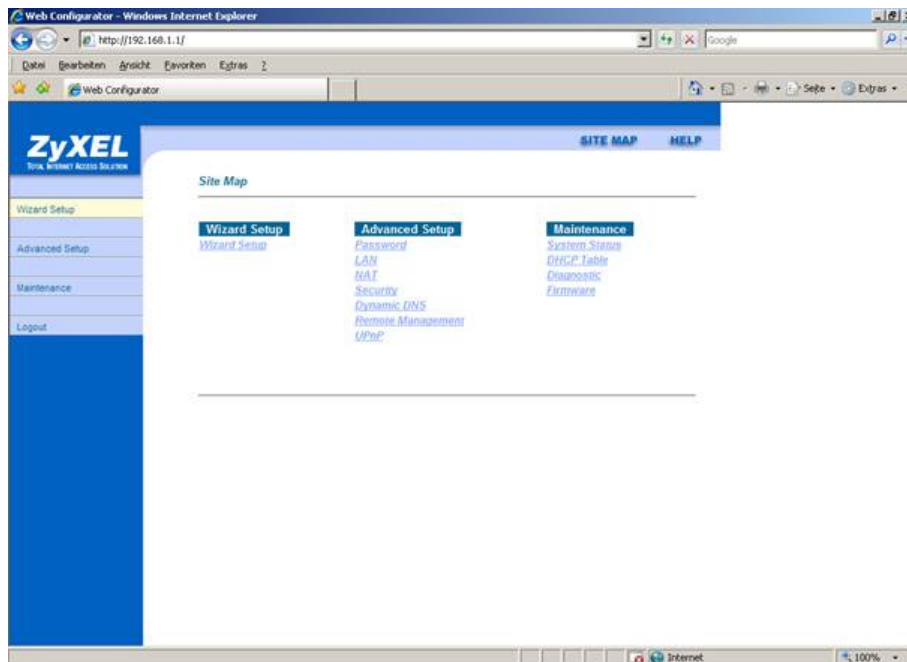
Werkparameter für Zugriff auf den Zyxel Router

Benutzername : admin

Kennwort: 1234



Klicken Sie oben Links auf **Wizard Setup**



Bitte auf **Next** klicken

The screenshot shows a web browser window titled 'Web Configurator - Windows Internet Explorer' with the address bar displaying 'http://192.168.1.1/'. The page content is from ZyXEL and is titled 'Wizard Setup - ISP Parameters for Internet Access'. On the left, there is a blue sidebar with a menu containing 'Wizard Setup', 'Advanced Setup', 'Maintenance', and 'Logout'. The main content area has a title bar with 'SITE MAP' and 'HELP' links. Below the title, the configuration fields are as follows:

Protocol	<input type="text" value="PPPoE/LLC"/>
Virtual Circuit ID	
VPI	<input type="text" value="8"/>
VCI	<input type="text" value="35"/>
ATM QoS Type	<input type="text" value="UBR"/>
Cell Rate	
Peak Cell Rate	<input type="text" value="0"/> cell/sec
Sustain Cell Rate	<input type="text" value="0"/>
Maximum Burst Size	<input type="text" value="0"/>

At the bottom of the configuration area, there is a 'Next' button.

Jetzt werden die neue ADSL Zugangsdaten eingefügt:

User Name ☞ IhrLogin@topdsl.ch siehe Datenblatt

Password ☞ Ihr ADSL Passwort , siehe Datenblatt

The screenshot shows a web browser window displaying the ZyXEL Web Configurator interface. The page title is "Wizard Setup - ISP Parameters for Internet Access". The interface includes a navigation menu on the left with options: "Wizard Setup", "Advanced Setup", "Maintenance", and "Logout". The main content area contains the following fields and options:

- Service Name: [Empty text box]
- User Name:
- Password:
- IP Address:
 - Obtain an IP Address Automatically
 - Static IP Address
 -
- Connection:
 - Connect on Demand: Max Idle Time Sec
 - Nailed-Up Connection

At the bottom of the form, there are two buttons: "Back" and "Finish".

Klicken Sie auf **Finish** und Testen Sie ob die ADSL Verbindung hergestellt wird.