

Konfigurationsanleitung Zyxel ADSL Router/Modem

Sie können via Webbrowser auf den Zyxel Router zugreifen.

Default IP Adresse à 192.168.1.1

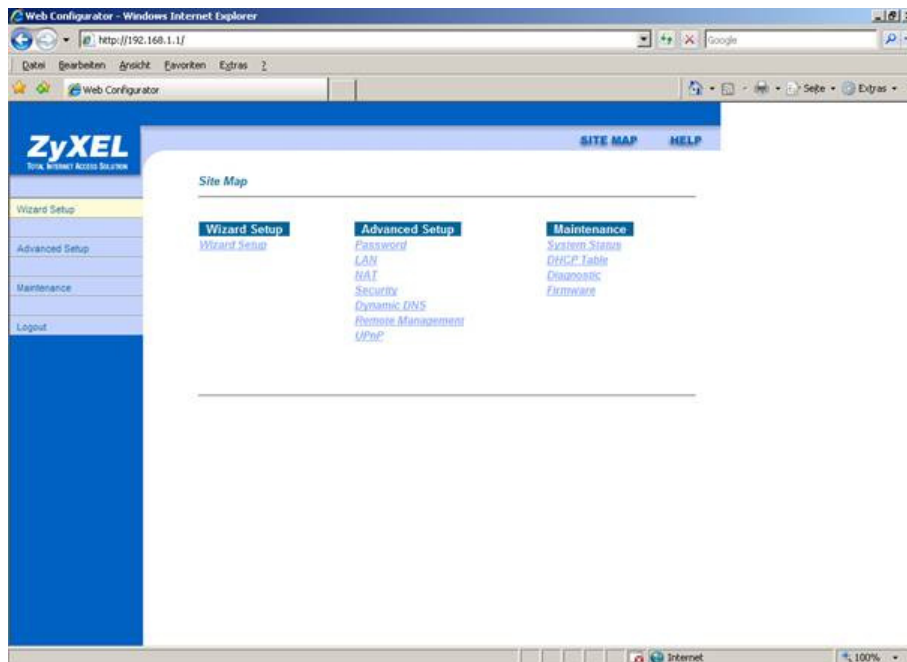
Werkparameter für Zugriff auf den Zyxel Router

Benutzername : admin

Kennwort: 1234



Klicken Sie oben Links auf **Wizard Setup**



Bitte auf **Next** klicken

The screenshot shows a web browser window titled "Web Configurator - Windows Internet Explorer" with the address bar displaying "http://192.168.1.1/". The browser's menu bar includes "Datei", "Bearbeiten", "Ansicht", "Favoriten", and "Extras". The main content area features the ZyXEL logo and a navigation menu on the left with the following items: "Wizard Setup", "Advanced Setup", "Maintenance", and "Logout". The main content area is titled "Wizard Setup - ISP Parameters for Internet Access" and contains the following configuration fields:

- Protocol:** A dropdown menu set to "PPPoE/LLC".
- Virtual Circuit ID:** Two input fields: "VPI" with the value "8" and "VCI" with the value "35".
- ATM QoS Type:** A dropdown menu set to "UBR".
- Cell Rate:** Three input fields: "Peak Cell Rate" with the value "0" and unit "cell/sec", "Sustain Cell Rate" with the value "0", and "Maximum Burst Size" with the value "0".

A "Next" button is located at the bottom of the configuration area.

Jetzt werden die neue ADSL Zugangsdaten eingefügt:

User Name ☞ IhrLogin@topdsl.ch siehe Datenblatt

Password ☞ Ihr ADSL Passwort , siehe Datenblatt

The screenshot shows a web browser window displaying the ZyXEL Web Configurator interface. The browser's address bar shows the URL <http://192.168.1.1/>. The page title is "Web Configurator - Windows Internet Explorer". The main content area is titled "Wizard Setup - ISP Parameters for Internet Access". The page includes a navigation menu on the left with options: "Wizard Setup", "Advanced Setup", "Maintenance", and "Logout". The main form contains the following fields and options:

- Service Name: [Empty text box]
- User Name:
- Password:
- IP Address:
 - Obtain an IP Address Automatically
 - Static IP Address
 -
- Connection:
 - Connect on Demand: Max Idle Time Sec
 - Nailed-Up Connection

At the bottom of the form, there are two buttons: "Back" and "Finish".

Klicken Sie auf **Finish** und Testen Sie ob die ADSL Verbindung hergestellt wird.